

INTRODUCTION

Solvents are liquid chemicals that are used to dissolve oils, greases and paints or are ingredients in paints, glues, epoxy resins, mastics, inks and pesticides. They are often used in cleaning and degreasing materials and tools and in spray painting. Examples include:

- Gasoline
- Acetone
- Alcohol
- Turpentine
- Paint Thinner
- Kerosene
- Mineral Spirits
- Toluene
- Xylene
- Methylene Chloride

PRECAUTIONS WHEN USING SOLVENTS

- Know the hazards of the solvent you are using. Read the SDS sheet and the manufacturer's labeling).
- Avoid skin contact.
- Use appropriate personal protection equipment (Goggles, respirators, aprons, face shields, etc.).
- Do not eat or smoke in areas where there are solvents.
- Wash thoroughly after working with solvents.
- Do not smoke, weld, burn or use any open flames (such as a match or a burning cigarette) in areas which may contain the vapor of chlorinated solvents as very toxic gases may be given off.



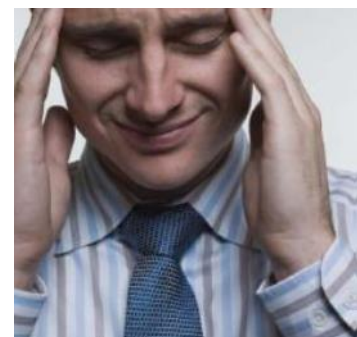
SOLVENT HAZARDS

If you are exposed to solvents, they can, depending on the circumstances, affect your health in many ways, and in some cases be very serious:

- Solvents can be flammable
- Solvents are volatile (evaporate readily to form vapors) and can then be inhaled
- Many solvents are able to pass readily through the skin, causing dermatitis
- Solvents can travel easily around the body in the nervous system

SHORT TERM HEALTH HAZARDS

- Irritation of the eyes, lungs, and skin
- Headaches, nausea, dizziness
- Light-headedness
- Drowsiness
- Motor impairment



LONG TERM HEALTH HAZARDS

- Damage to the nervous system
- Liver and kidney damage
- Certain cancers

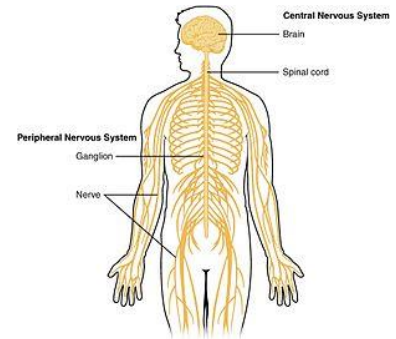
HOW SOLVENTS ENTER THE BODY

- Breathing vapors and fumes
- Absorption on contact with the skin
- Swallowing liquid solvents

Depending on the circumstances, solvents can affect your health in many ways, and in some cases, very seriously. When possible, ask for solvent-free materials or use safer solvents.

CONCLUSION

- When working with solvents, always make sure the area is well ventilated.
- Use the minimum amount for the job and keep lids on containers.
- Use sealed containers for solvent-contaminated waste.
- Do not leave solvent-contaminated rags lying around; dispose of the rags according to the manufacturer's suggestion.





Builders' Exchange
OF SANTA CLARA COUNTY

Safety Meeting Report

Employer _____

Date _____

Location _____

Meeting Supervisor _____

Safety Meeting Subject: _____

Accidents Reviewed: _____

Suggestions: _____

Employee's Attending

1. _____

2. _____

3. _____

4. _____

5. _____

6. _____

7. _____

8. _____

9. _____

10. _____

11. _____

12. _____

13. _____

14. _____

15. _____